

How Manor Uses Advanced Modular Construction Technology to Build Better Homes



Discover how Manor Homes uses advanced modular construction technology to deliver better quality, faster build times, and smarter outcomes for Australian families — all with less stress and more certainty.

December 24, 2025



How Manor Uses Advanced Modular Construction Technology to Build Better Homes

When most people think about building a home, they picture months of mud, delays, and uncertainty. But there's another way — one that's smarter, faster, and built for the way Australians live today.

At Manor, we use **modular construction** — a method that's not just different, but better. Backed by advanced

technology and decades of experience, we've helped hundreds of families across New South Wales build high-quality homes without the headaches.

In fact, Australian family couples who are smart about their investment in their family home are increasingly turning to modular — not as a fallback, but as the best path forward. It's about getting more: more certainty, more efficiency, and a home that truly fits your lifestyle.

Modular Construction: The Smart, Modern Way to Build

Let's clear something up — modular isn't a compromise. It's [a better system](#) from the ground up.

Instead of building your home piece-by-piece out in the weather, we build most of it indoors in a factory. That includes entire sections of the home — floors, walls, roofs — built to exacting standards. Then we bring those modules to your site and assemble them in a matter of days, not months.

This approach means:

- **Your build stays on track** — no hold-ups due to rain, wind, or missing trades
- **The quality stays high** — built under controlled conditions using precision equipment
- **You move in sooner** — factory work and site prep happen at the same time
- **Less waste, cleaner site** — better for you, and for the planet

For us, modular isn't just a technique — it's an upgrade.

Taking It Further with the Latest Construction Technology

Modular building is already ahead of the curve. But at Manor, we go even further by using advanced tools and digital systems that make our homes even more accurate, efficient, and well-built.

Here's how we do it:

Smart Steel Framing

We use a system called [FRAMECAD](#) — a computer-guided steel framing machine. This equipment reads digital plans and produces framing components that are accurate to the millimetre. Every screw hole, every service cutout is exactly where it should be.

What this means for you:

- Stronger, straighter frames
- Faster installation
- No surprises during fitout

Digital Drafting Done Right

Before a single wall is built, your home is fully designed using smart drafting software like [AutoCAD Revit](#), alongside our own in-house digital tools. This lets us plan everything down to the smallest detail — including kitchen cabinets, lighting placement, even how materials are ordered.

The result? What's on paper is exactly what gets built.



Always Evolving

Technology doesn't stand still — and neither do we. Manor constantly looks for new ways to build smarter, whether it's how we manage materials, streamline production, or plan your home. We believe that if there's a better way to build, it's worth doing.

What It Means for You

You don't have to understand CAD software or framing systems to appreciate the benefits. Because at the end of the day, what matters most is what you get from it.

Our advanced modular construction delivers:

- **Fewer delays** – factory conditions and faster scheduling get you in sooner
- **Better quality** – precision tools make better-built homes
- **More certainty** – what you see is what you get, no last-minute surprises
- **Lower stress** – one team managing it all, from first sketches to final handover

It's all part of how we help Australians achieve their family lifestyle vision, by building homes that make sense for how we live today.

A Homebuyer's Typical Experience

"We were amazed at how seamless the whole process was. From design to delivery, everything was done to a high standard — and we moved in faster than we thought possible. Choosing Manor's modular system gave us a home that fits our lifestyle, with none of the stress we expected."

— Homeowner, Central Coast NSW



Read this
blog online

Why Families Keep Choosing Manor

We've been building modular homes for decades — not just because it's more efficient, but because it delivers better outcomes. Families keep coming back to us because they know they'll get a home that's built with care, precision, and integrity.

Among them are many **Australian family couples who are smart about their investment in their family home (style and value)** — people who know that a home should be built for life, not just for handover day.

We're proud to design homes that sit beautifully in the Australian landscape. We build sustainably. We follow a proven, easy process. And most of all, we guide you through the journey with no surprises.

Because at the heart of every home is a story — and at Manor, we're committed to **building stories, crafting homes**.

Want to See If Modular Is Right for You?

If you're considering building a home in New South Wales, modular might be the smarter choice you didn't know existed. And we're here to help you explore that.

Some of our other articles we think you'd like

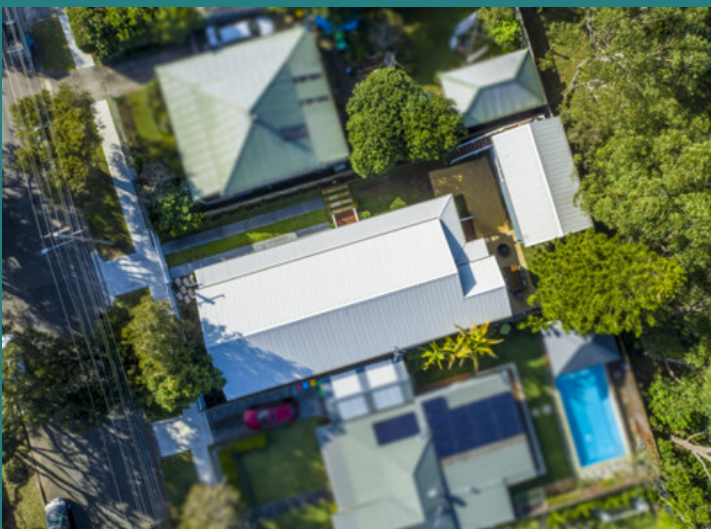


The Vendor's Statement in NSW: Why It's Essential for Land Buyers and Home Builders

Discover key insights essential for land buyers and home builders, from zoning laws to budgeting, to make informed and successful decisions.



Scan QR Code to Read



Can I Build a Granny Flat or Secondary Dwelling on My Property in NSW?

Learn how to build a granny flat with expert tips on design, permits, and budgeting. Create the perfect space for family or rental income!



Scan QR Code to Read



www.manor.net.au

1800 55 18 18

5 Sunny Bank Road, Lisarow NSW 2250

Futurebuild Group P/L t/a | Manor Group (NSW)
BLN 269686C ABN 98 150 296 558 © 2022 Futurebuild Group P/L v1.0 - 24.06



manor
BUILT FOR LIVING.